

RAYMOND FRANKLIN HENDERSON  
*"What now if the sky were to fall?"*

Hi-Y 2,4  
F.F.A. 1

Art Club 3

*"Ray" . . . good-looking class member . . . owns a fast car . . . his dancing eyes are a real asset.*



RONALD PHILLIP HILL

*"In silence also there's a worth that brings no risk."*

Scenery Club 3,4  
Track 1  
Hi-Y 1

Chorus 1,2  
Football J.V. 2  
Art Club 2

*"Ronnie" . . . a quiet, good-looking lad . . . artistically gifted . . . a true gentleman in character and actions.*



BARBARA LYNN HITCHINS

*"Of all the animals, the boy is the most unmanageable."*

*"Lynn" . . . absent during sophomore year — attended Sanford Prep . . . likes dramatics . . . seems to find homeroom especially funny.*





# JOHN FRANCIS HOLLIS

*"Two roads diverged in a wood, and I took the one  
less traveled by and that has made all the difference."*

Football 1,2,3,4  
Basketball 1,2,4  
Track 1,2,3,4  
Cross Country 1  
Honor Society 3,4  
President 4  
Student Council 2,4  
Executive Council 4  
Honor Attendance 1,2

Key Club 4  
President 4  
Jr. & Sr. Play  
Sound Effects  
President of Class 1  
Vice-President of Class 3  
Boys' State  
Jr. Classical League 2

*"John" . . . future surgeon of the class . . . "Blueberry" is his nickname  
"with a story" . . . works hard at all he starts.*



# SUE ESTLIN HOPKINS

*"The one essential in life is laughter; the plus ingredient."*

F.T.A. 2,3,4  
Historian 4  
Cheerleading Club 1,3,4  
President 3  
Cheerleader 2,3,4  
Co-Captain 3  
Treasurer of Class 3  
Sr. Play  
Publicity

Jr. Bake  
Table Chairman  
Jr. Prom  
Finance  
Basketball 1,2  
Tri-Hi-Y 2  
Executive Council 2  
Honor Attendance 2  
Band 1

*"Sue" or "Grace" . . . tagged as "Stacy's little sister" . . . could make Buddha  
laugh . . . will never be lost for friends.*



# RICHARD DARRELL HOWARD

*"I laughed 'til I cried."*

Blue Jay 2,3,4  
Photography 4  
Jr. & Sr. Play

Jr. Prom  
Committee Chairman  
"Wonder Hat"  
Hi-Y 2

*"Dick" . . . played Mr. Judson in "Six Stitches for Ego" . . . professional ad-  
libber . . . responsible for prom decorations . . . another 'life of the party.'*

BRENDA LEE HUGHES

*"Speaking does not always come easily to her, but nevertheless we understand her by her ways."*

Civil Air Patrol 3,4  
Treasurer 3  
Library Club 1,2,3,4  
Parliamentarian 2  
Historian 3  
President 4

Fashion Show 1,2,3,4  
Perfect Attendance 2  
Honor Attendance 3  
Basketball Manager 1,2  
ALOHA  
Typist

*"Brenda" . . . otherwise known as "Casey" . . . able library assistant . . . enthusiastic CAP cadet . . . hard worker . . . undecided about future . . . welcomed ALOHA typist.*



BETTY JANE HUTTON

*"In quiet minds the greatest things do grow."*

Executive Council 3,4  
F.N.A. 1,2,3,4  
Chorus 2,3,4  
Honor Attendance 2

Nurse Assistant 2  
Oklahoma  
L'il Abner

*"Betty Jane" . . . has the dream of most girls — naturally curly hair . . . really feminine in looks and action . . . her quietness is a joy.*



CAROLE FAYE JAMES

*"A pretty girl's cares are none, she's liked by everyone."*

Chorus 1

Library Club 1

*"Carole" . . . stunning beauty . . . possesses peaches 'n' cream complexion . . . has a refreshingly even temper and friendly smile.*





CAROL ANN JOHNSON

*"He is truly happy that makes others happy."*

Jr. & Sr. Bake  
Co-Chairman  
Historian of Class 4  
ALOHA  
Assistant Senior Editor  
Treasurer of Seaford Youth  
Canteen 4  
Girls' State Auditor  
F.T.A. 1,2,3,4  
Secretary 3  
Tri-Hi-Y 2,3  
Vice-President 3  
Honor Society 4  
Cheerleader 2,3,4  
Co-Captain 4  
Office Assistant 2,3,4

Blue Jay 2,3,4  
Advertising Manager 4  
Circulation Manager 3  
Student Council Secretary 3  
Hockey 2,3  
Jr. Play  
Programs  
Jr. Prom  
Reservations Co-Chairman  
Jr. Classical League 1,2  
Secretary 2  
Homecoming Queen Attendant 2  
Honor Attendance 2  
Cheerleading Club 1,4  
Secretary of Class 1

*"Carol" . . . still bewildered about winning "Miss Fire Prevention" . . . cute, all-around girl . . . happiest when serving others . . . her future is in Home Economics.*



FAITH ANN JOHNSON

*"Life is too short to be bugged."*

Tri-Hi-Y 2,4  
Fashion Show 2

Honor Attendance 2

*"Faith Ann" . . . hails from Blades . . . life is one big ball to her . . . beauty culture is her chosen field.*



STANLEY WAYNE JOHNSON

*"It matters not how a man dies, but how he lives."*

Art Club 4  
Safety Patrol 4

Hi-Y 1,2  
Perfect Attendance 2

*"Stanley" . . . walks in silence . . . slow, easy-going temperament . . . has no enemies . . . can be seen each afternoon on guard duty."*

ARLAND KEITH JONES

*"School breaks up his whole day."*

Art Club 4

*"Keith" . . . never says much . . . content with the essentials in life . . . unruffled by busy world around him.*



NANCY ELLEN JONES

*"A heart that gives, gathers."*

F.T.A. 1,2,3,4  
Librarian 4  
Tri-Hi-Y 1,2,3,4  
Jr. & Sr. Play  
Tickets

Office Assistant 4  
Jr. Class Bake  
District Chairman  
Jr. Classical League 1,2

*"Nancy" . . . a dedicated worker . . . likes Concord . . . blessed with curly hair . . . plans to enter the teaching profession.*



HOWARD MONROE JOSEPH, JR

*"The less a man thinks or knows about his virtues, the better we like him."*

President of Class 4  
Sr. Play  
Student Council 1,2,4  
Track 1,4  
Baseball 3,4

Honor Attendance 2,3  
Executive Council 3  
Hi-Y 2  
Football 1

*"Howard" . . . capable, well-rounded class leader . . . always the object of good-natured teasing . . . neat in appearance.*





JAMES EDWIN JOSEPH

*"God put in man thought, humor, and friendliness."*

Football 4

*"Jimmy" . . . has command of a jolly disposition . . . can play a cool drum . . . a ready, willing, and able class supporter . . . late-coming, hard fighter on football squad.*



RICHARD ALLEN KELLETT

*"Throw fear to the wind."*

Art Club 3,4

Basketball 4

Baseball 4

Track 4

*"Dick" . . . transferred from Claymont in Junior year . . . ambitious first-baseman on Blue Jay nine . . . has special interest at Goldey Beacom.*



*Class Float—Homecoming 1959*

**CAROL CARSON KELLEY**

*"Responsibility walks hand in hand with capability."*

|                        |                          |
|------------------------|--------------------------|
| Honor Society 4        | Jr. & Sr. Bake           |
| F.T.A. 1,2,3,4         | Table Chairman           |
| Tri-Hi-Y 2,3,4         | Prom Committee Chairman  |
| Hockey 1,2,3,4         | Honor Attendance 1,2,3   |
| Basketball 1,2,3,4     | V.F.W. Contest Winner    |
| Secretary of Class 4   | Jr. Classical League 1,2 |
| BLUE JAY 2,3,4         | Executive Council 2      |
| Girls' Sports Editor 4 | Cheerleading Club 1      |
| ALOHA                  |                          |
| Copy Editor            |                          |

*"Carol" . . . one of our sports-minded twins . . . always worried about copy for Sports' Page . . . easy to please . . . a good friend.*



**JOAN EVANS KELLEY**

*"Still waters run deep"*

|                      |                         |
|----------------------|-------------------------|
| Basketball 1,2,3,4   | Honor Society 4         |
| Hockey 1,2,3,4       | Jr. & Sr. Bake          |
| Tri-Hi-Y 2,3,4       | Table Chairman          |
| F.T.A. 1,2,3,4       | Prom Committee Chairman |
| BLUE JAY 3,4         | Honor Attendance 1,2,3  |
| Copy Reader 4        | Jr. Classical League 2  |
| ALOHA                | Office Assistant 2      |
| Girls' Sports Editor | Cheerleading Club 1     |

*"Joan" . . . has dry, witty sense of humor . . . nimble athlete . . . hard worker . . . dependable friend . . . future teacher.*



**JOHN HUGH KIMBLER**

*"The best way to have friends is to be one."*

|                      |              |
|----------------------|--------------|
| Civil Air Patrol 3,4 | Chess Club 3 |
| Secretary 3          | "Li'l Abner" |

*"John" . . . interested CAP cadet . . . shy, courteous lad . . . tries hard to please . . . can take a joke.*





JAMES DAVID KNOWLES

*"A little nonsense now and then is relished by the wisest man."*

Art Club 4

*"David" . . . really polite and nice . . . can flash a mischievous grin . . . not afraid of work . . . owns a hot, black Ford.*



VAN LANKFORD

*"Moderation, the noblest gift of Heaven."*

F.F.A. 1,2,3

Secretary 2

Vice-President 3

*"Van" . . . one of our future farmers . . . the silent type . . . hails from Reliance where he's active in the Grange.*



LYNNE CARLISLE LEWIS

*"The social smile; the sympathetic tear."*

Tri-Hi-Y 4

Dance Committee 4

Chorus 4

Sr. Play Publicity 4

*"Lynne" . . . joined us this year from Portsmouth, Ohio . . . has an amusing, outgoing personality . . . keeps P.O.D. class alive.*

DELORES GRACE LLOYD

*"My heart is like a singing bird."*

Tri-Hi-Y 2,3,4

Treasurer 2

Cheerleader 1,2,3,4

Cheerleading Club 1

Chorus 1,2,3,4

County Chorus 3

"Li'l Abner"

"Oklahoma"

Jr. & Sr. Play Usher

Honor Attendance 3

Perfect Attendance 1,2

Jr. Bake District Chairman

Office Assistant 2

*"Dee" . . . has got her "wings" . . . well-known and loved as "Daisy Mae"  
. . . peppy cheerleader . . . friendly to all.*



JOHN COOPER LYNCH

*"Nothing is at last sacred but the integrity of your own mind."*

Football 1,2,3,4

Basketball 1,2,3,4

Track 1,2,3,4

Cross Country 1

Student Council 2,4

Vice-President 4

Athletic Association 1,2,4

Honor Society 2,3,4

Vice-President 3

Letterman's Club 4

Key Club 4

Fire Squad 4

Flag Pole Attendant 3,4

Class Officer

Vice-President 4

President 2,3

Seaford Youth Canteen

President 4

Vice-President 3

Jr. Play Lighting

Chess Club President 3

Prom Committee Chairman

Honor Attendance 2

Lighting Committee 1

*"Jack" . . . truly dedicated class servant, leader, and athlete . . . proves  
funny when least expected . . . knows when to be quiet . . . great guy.*



JULIA ANNE LYNCH

*"A friend may well be reckoned the masterpiece of nature."*

Tri-Hi-Y 1,2,3,4

Hockey 1,2,3,4

Honor Attendance

*"Julia" . . . foreboding Blue Jet goalie . . . usually very quiet . . . fair com-  
plexion . . . will do her share of work.*





PATRICIA MAY MASER

*"Toil, says the proverb, is the sire of fame."*

Tri-Hi-Y 1,2,3,4  
County Chorus 3,4  
Chorus 1,3  
"Li'l Abner"

"Oklahoma"  
Honor Attendance 1,3  
Perfect Attendance 2  
Fashion Show 1,2

*"Pat" . . . has beautiful, dark hair . . . dependable . . . always around when needed . . . a riot at times.*



RONALD JACOB MASSEY

*"Life is not so short, but that there is always time for courtesy."*

F.F.A. 1,2,3,4  
Assistant Sentinel 1  
Sentinel 3,4  
Parliamentarian 2

F.F.A. Judging Contest, Second Place  
Industrial Arts 1,2,3

*"Jack" . . . a quiet member of our class . . . busy and interested in farm life . . . a polite lad.*



NANCY ROSE MAYER

*"Nothing was ever achieved without enthusiasm."*

Cheerleader 2,3,4  
Co-Captain  
Cheerleading Club 1,4  
F.T.A. 1,2,3,4  
President 4  
Jr. & Sr. Plays  
Tri-Hi-Y 2,3  
Secretary 2

Jr. & Sr. Bakes  
Table Chairman  
Class Historian 3  
Office Assistant 3,4  
Prom Bid Chairman  
BLUE JAY 2  
Honor Attendance 1,2  
Jr. Classical League 1,2  
Vice-President 2

*"Nance" or "Rosie" . . . spirited cheerleader . . . has mind of her own . . . sports rosy cheeks and glowing hair . . . wonderful friend . . . interested in education and psychology.*

MELISSA ANN McGINTY

*"Which can say more  
Than this rich praise—that you alone are you."*

Tri-Hi-Y 2,3,4  
Blue Jay 4  
Jr. Class Play  
Student Director

Sr. Class Play  
Ticket Chairman

*"'Liss'" . . . transferred here from Argentina in Sophomore year . . . a "Johnny-  
reb" at heart . . . a true friend . . . plans to major in Espanol.*



WILLIAM RAY MEARS

*"Whenever I feel like exercising, I lie down until the feeling passes."*

Football 1,2,3,4  
"Oklahoma"  
Hi-Y Pres. 2  
Class Treasurer 2

Perfect Attendance 2  
Honor Attendance 1  
Track 1

*"Billy Ray" . . . known for problems with Cupid . . . has few cares . . . a unique  
combination—cute flirt with snappy temper.*



DONNA LORRAINE MOWREY

*"Leave no stone unturned."*

F.N.A. 3,4  
Basketball 3,4

Softball 4  
Jr. Class Play Usher

*"Donna" . . . came to us in her Junior year from East Lansdowne, Pa. . . .  
enjoys portrayal of characters . . . energetic guard on basketball team.*





THOMAS VINCENT MULRINE

*"Humor is one of the elements of genius".*

Hi-Y 2,3,4

Sr. Class Play

Track 1,4

Football Manager 2,3

Fire Squad 4

Perfect Attendance 3

Honor Attendance 1,2

Jr. Classical League 2

*"Sliver" . . . loves life and makes the best of it . . . enjoys independence . . . known for his wicked laugh (Ha!) . . . always seen with Bob—his other half.*



SANDRA JOYCE NEWTON

*"She has proven her worth by her efforts."*

American Field Service

Returnee from Japan

Hockey 1,2,3,4

ALOHA

Ass. Index Editor

Blue Jay 2,3,4

Honor Society 3,4

F.T.A. 3,4

Tri-Hi-Y 2,3,4

Vice-President 4

President 3

Sr. Class Play

Programs

Sr. Class Bake

Table Chairman

Basketball Manager 3

Student Council 1,3

Executive Council 3

Jr. Class Play

Jr. Prom—Committee Chairman

Honor Attendance 2

Jr. Classical League 1

Cheerleading Club 1

Basketball 1

*"Sandy" . . . portrayed "Merry" in Jr. Play . . . interesting speaker . . . ingenious, hard-working class member . . . undecided about future.*



CAROLE KAY NORGAN

*"Of manner gentle, of affections mild."*

F.N.A. 3

Chorus 3

"Li'l Abner"

Honor Attendance 3

Perfect Attendance 1,2

Music Club 2

Tri-Hi-Y 1

*"Carole" . . . velvety dark hair frames her pretty face . . . very quiet and shy . . . her eyes do all the talking . . .*

DONALD FRANKLIN O'BIER

*"His best he'll give to any task  
And cheerfully does whatever he's asked."*

|                  |                        |
|------------------|------------------------|
| Track 4          | Hi-Y 2,3,4             |
| Football 1,2,3,4 | "Li'l Abner"           |
| Fire Squad 4     | Honor Attendance 1,2,3 |
| F.F.A. 2,3,4     | Jr. Classical League 1 |
| Secretary 3      |                        |

*"Donald" . . . our good-natured 'farmer-buddy' . . . hard fighting Blue Jay  
. . . never known to say "No" when needed . . . a great classmate*



ANDREA ELSIE OLAFSON

*"It is more blessed to give than to receive."*

|                  |                      |
|------------------|----------------------|
| Blue Jay 1,2,3,4 | F.T.A. 1,2,3,4       |
| Art Editor 3,4   | "Li'l Abner"         |
| ALOHA            | Honor Attendance 2   |
| Art Editor       | Perfect Attendance 1 |

*"Andy" . . . artistically gifted . . . very responsible helpmate . . . wastes no words, but speaks sensibly . . . true to all who know her.*



DEANNA MAE PARKER

*"People who make no noise are dangerous".*

|                      |                        |
|----------------------|------------------------|
| F.N.A. 2,3,4         | Fashion Show 2,3       |
| Chorus 1,2,3         | F.T.A. 2               |
| "Li'l Abner"         | Cheerleading Club 1    |
| Jr. Class Play Usher | Jr. Classical League 1 |

*"Dee" . . . unassuming and fun-loving . . . represents Nanticoke Annex . . . plans to enter nursing profession.*





EDGAR DAVID PARKER

*"I'll never put off until tomorrow what I can do the day after."*

Jr. & Sr. Play  
Scenery Club 3,4  
Fire Squad 4

Civil Air Patrol 3,4  
President 3  
"Li'l Abner"  
Industrial Arts Club 1

*"Ed" . . . a great procrastinator . . . type-cast as policeman . . . has flare for writing . . . known for odd (!) means of transportation.*



BETTY JO PARKS

*"A ring on the finger is worth two on the phone."*

Tri-Hi-Y 4  
Chorus 1,2,4  
Jr. Bake  
District Chairman

Library Aid 4  
Dramatics Club 2  
Cheerleading Club 1

*"Parky" . . . very polite . . . volunteers her services . . . late-coming ALOHA typist . . . has genuine smile . . . her future is already planned.*



LARRY ALBERT PASSWATERS

*"Handsome is as handsome does."*

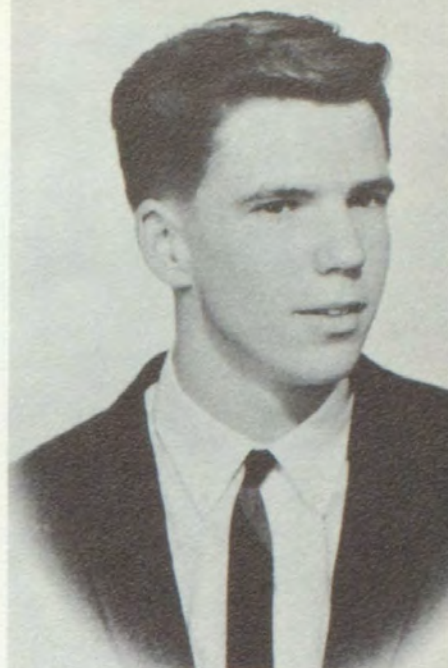
Art Club 1,4

*"Larry" . . . handsome in a quiet, stern sort of way . . . plans to sail the seas for Uncle Sam.*

RONALD GRAY PATTERSON

*"Slow to speak, slow to wrath."*

*"Ronnie" . . . knows all about mechanics—often seen at Granville's . . . acquainted with soda jerking too . . . likes to have a good time.*



JANICE MARLENE PEARSON

*"Seen, but not heard."*

*"Janice" . . . came to S.H.S. this year from West Middlesex, Pa. . . . wouldn't hurt a fly . . . has silk 'n' satin complexion.*



PATRICIA ANN PHILLIPS

*"Full of sweet indifference."*

Basketball 2,3,4

Co-captain 2

F.T.A. 4

Tri-Hi-Y 1,2,4

Executive Council 4

Honor Society 4

Jr. Class Bake

District Chairman

Honor Attendance 3

Jr. Classical League 1,2

Historian 1

*"Pat" . . . neat and precise . . . quick guard on basketball team . . . has congenial smile for all.*





**THERESA EVANGELINE POYNER**

*"Good sense and good nature are never separated."*

F.N.A. 3,4  
Blue Jay 3,4

Tri-Hi-Y 1,2  
Honor Attendance 2

*"Theresa" . . . has generous nature . . . really knows her mathematics . . . a dilligent, co-operative worker in many activities.*



**JOSEPH MANNING PRICE**

*"A tall shy physique leaves room for a big heart."*

Hi-Y 3,4  
Football 1,2,3,4  
Basketball 2,3,4  
Track 2,3,4

Perfect Attendance 3  
Honor Attendance 1,2  
Industrial Arts Club 1

*"Joe" . . . takes his time except when on the basketball court . . . though he's not loud, he's well-known and highly regarded.*



**MARION ELAINE RANK**

*"Forever foremost in the ranks of fun."*

Majorette 1,2,3,4  
Tri-Hi-Y 2,3,4  
Chorus 4  
County Chorus 4  
Blue Jay 1,3,4  
Circulation Manager 4  
ALOHA  
Co-Index Editor  
Office Assistant 2,3,4

Jr. Play Publicity  
Jr. Bake  
District Chairman  
"Li'l Abner"  
"Oklahoma"  
Honor Attendance 3  
Perfect Attendance 2  
Majorette Club 1  
President

*"Elaine" . . . energetic 'Little miss' with radiant smile . . . is real 'hep' to latest dances . . . has flairs for other arts.*

JOANNA LEE RAWLINS

*"She is not difficult to please,  
She can be silent as the trees."*

Tri-Hi-Y 2,3  
Fashion Show 1,2,3  
"Oklahoma"

Honor Attendance 2  
Chorus 1  
Library Club 1

*"Jo" . . . never complains . . . has smile for all . . . works hard to help  
and please.*



SANDRA LEE ROBINSON

*"Silent, serene, and sweet."*

Tri-Hi-Y 2,3,4  
Chorus 1,2,3  
"Oklahoma"

Fashion Show 2  
Library Club 1

*"Sandy" . . . "Daughter of the gods; divinely tall." . . . has Venus-like hair,  
eyes, and coloring . . . truly sweet.*



REBECCA ELINOR ROLPH

*"Little & cute, Witty & wise, really something for her size."*

Cheerleader 1,2,3,4  
Co-captain 2  
F.N.A. 1,3  
Jr. & Sr. Plays  
"Li'l Abner"

Perfect Attendance 2  
Honor Attendance 1  
Dramatics Club 2,4  
Treasurer 2

*"Becky" . . . peppy classmate . . . known for impersonations . . . played  
"Roach" in Jr. Class production . . . fun to be around . . . friendly to all.*





FRANCES ADELE RUGG

*"Music, the best of the fine arts, ministers to human welfare."*

Tri-Hi-Y 1,2,3,4

Softball 4

County Band 2,3,4

Jr. & Sr. Bake

District Chairman

Perfect Attendance 2,3

Honor Attendance 1

"Li'l Abner"

Band 1,2,3,4

*"Adele" . . . loyal school supporter . . . can look so bewildered and bothered . . . really funny at times—especially when teased about her neighbor.*



MARY ANNE SARGENT

*"He that has patience may compass anything."*

Tri-Hi-Y 1,2,4

Honor Society 4

Dance Band 3

County Band 3,4

"Li'l Abner"

Honor Attendance 2,3

Band 2,3,4

Jr. Classical League 1,2

*"Anne" . . . talented pianist . . . one of the smart ones in our midst . . . lends her services to anyone or any task.*



CALVIN KENNETH SAVAGE

*"He'd stop St. Peter's roll call to ask a question."*

Hi-Y 4

Track 2,4

Jr. & Sr. Plays

Gym Assistant 3,4

Perfect Attendance 1,2,3

Science Club 2

Gym Club 1

*"Ken" . . . inquisitiveness, procrastination, and imagination are his main resources . . . never a dull moment when he's around . . . gave excellent performances in class plays.*

GEORGE SCHWEBLER, JR.

*"There are rich people and there are also people who have money."*

Football 4  
Blue Jay 4

Boys' Sports Editor

Class Treasurer 4  
Hi-Y 4

*"George" a welcomed addition to any class . . . came from Mt. Pleasant  
. . . an accomplished artist . . . enthusiastic worker and crusader.*



BECKY ANN SCOTT

*"Her eyes as stars of twilight fair,  
Like twilights, too, her dusky hair."*

Cheerleader 2,3,4  
F.N.A. 4  
Basketball 1,2,3,4  
Co-captain 2  
Softball 4  
Chorus 2

*"Oklahoma"*  
Dramatics Club Secretary 2  
Class Historian 2  
Cheerleading Club 1  
Jr. Classical League 1  
Honor Attendance 1

*"Becky" . . . 'cute as a button' . . . has big, warm heart . . . hard-working  
pep leader.*



VICTORIA IRENE SENEY

*"Give me a place to stand, and I will move the earth."*

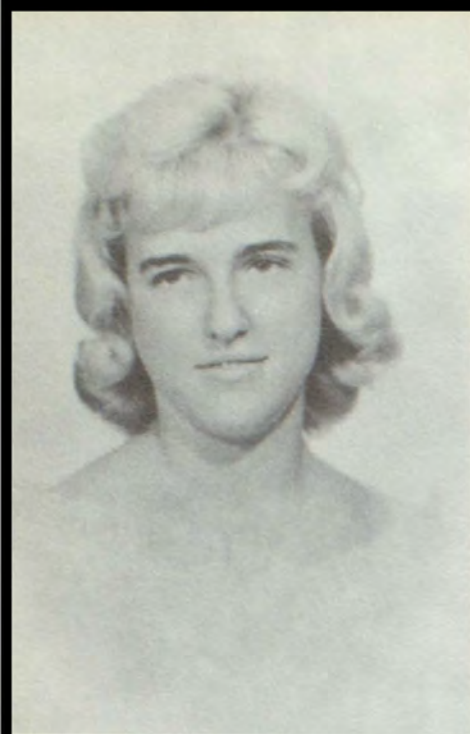
ALOHA

Assistant Photography  
Nanticoke Rocket Society 4  
Dramatics Club 1,2,4

Jr. Classical League 1,2  
Gym Assistant 1  
Hockey 1  
Civil Air Patrol 1

*"Vicky" . . . has wide scope in world of science . . . loves a good time . . .  
sure can talk . . . a good buddy . . . sometimes drives a red "jag".*





SYLVIA BLANCHE SHENTON

*"Always painting the clouds with sunshine."*

Tri-Hi-Y 3,4  
"Li'l Abner"  
Nurses Office 3

Dramatics Club 1  
Perfect Attendance 1  
Fashion Show 1

*"Sylvia" . . . 'up'on latest dances too . . . has lovely halo-like hair . . . "Miss Personality" . . . sports dimples when she smiles.*



JANET SHORT

*"Be silent and safe—silence never betrays you."*

Fashion Show 1

Chorus 1

*"Janet" . . . extremely quiet, shy girl . . . come sing along.*



BONNIE FAYE SIRMAN

*"I grow old learning something new every day."*

Library Club 1,2,3,4  
Treasurer 3

Library Assistant 3  
Fashion Show 3

*"Bonnie" . . . knows her books . . . size is no measure of worth . . . can smile when we're all glum.*

BEVERLY ANN SMITH

*"She appeared a true goddess in her walk."*

Blue Jay 4  
Assistant Photographer  
Gym Assistant 4  
F.N.A. 3,4  
Nurses' Office 3

Jr. Class Play Usher  
"Li'l Abner"  
Jr. Classical League 1  
Tri-Hi-Y 1

*"Bev" . . . left us for a year . . . has few worries . . . likes to have a good time . . . future plans are still a little hazy.*



ROBERT WAYNE SMITH

*"The mirth and fun grew fast and furious."*

Art Club 4  
Basketball 4  
Track 4

Football 1,2  
Gym Club 2

*"Wayne" . . . has handsome features . . . interested in cars . . . talented artist and dancer.*



RUTH ANNE SMITH

*"A daughter of the Gods, divinely tall and divinely fair."*

Cheerleader 1,2,3,4  
Co-captain 1  
Chorus 1,2,3,4  
Sr. Play  
Cheerleading Club 1,3,4  
Secretary-Treasurer 3  
Office Assistant 2,3,4  
Aloha  
Photo Editor

County Chorus 3,4  
Jr. Prom Co-chairman  
"Li'l Abner"  
Honor Society 3  
Jr. Classical League 1,2  
Tri-Hi-Y 2  
Honor Attendance 2  
Student Council 1

*"Ruthie" . . . has natural beauty that won her titles of "Miss Fire Prevention" and "Miss Nanticoke" . . . always in the 'center' of cheerleading activities . . . drives "The Arc".*





BARBARA LEE SPENCER

*"Happy am I; from care I'm free."*

Band 3,4  
*"Li'l Abner"*  
 Jr. Class Play

F.N.A. 3  
 Perfect Attendance 3

*"Bobbie" . . . performed as "Greta" in Jr. play . . . moved here last year . . . has pitched in and done her share.*



ALBERTA LEE STEVENS

*"Ability wins esteem."*

Hockey 2,3,4  
 Basketball 2,3,4  
 Softball 3,4

Tri-Hi-Y 1,2,4  
 Honor Attendance 1,2,3  
 Fashion Show 1

*"Deede" . . . avid sports enthusiast . . . knows all about Yogi Berra and the Yankees . . . in 'back' of hockey team . . . future secretary.*



FRANCES ANNE STEWART

*"Investments in knowledge are wise ones."*

BLUE JAY 1,2,3,4  
 News Editor 3  
 Co-Editor 4  
 ALOHA  
 Subscription Manager  
 Honor Society 2,3,4  
 Tri-Hi-Y 1,2,3,4  
 Jr. & Sr. Play  
 Jr. & Sr. Bake  
 District Chairman

Sr. Dance Chairman  
 Hockey 2,3,4  
*"Li'l Abner"*  
*"Oklahoma"*  
 Jr. Prom  
 Committee Chairman  
 Jr. Classical League 1,2  
 Perfect Attendance 2  
 Winner V.F.W. Essay Contest 2  
 Honor Attendance 1

*"Fran" . . . a good friend . . . digs and finishes whatever she starts—well . . . has lovely dark hair . . . well-known for play performances.*

THERESA ANN THOMAS

*"Cheerful and gay, she goes her merry way."*

Chorus 1,3,4

County Chorus 4

Jr. & Sr. Play Usher

Dramatics Club 1,3

"Li'l Abner"

"Oklahoma"

Tri-Hi-Y 2

Honor Attendance 1,3

*"Terry" . . . saves herself for close friends . . . spreads sunshine when she smiles.*



BARBARA TOWERS

*"Music is well said to be the speech of angels".*

Chorus 1,2,3

County Chorus 1,3

State Chorus 3

"Li'l Abner"

Library Club 1,2,3

Library Assistant 2

Honor Attendance 3

Guidance Office 4

*"Barb" . . . has real musical ability—especially when she sits down to a piano . . . busy worker in the office.*



JAMES ROBERT STOUT

*"What this country needs is a good five-cent cigar."*

Industrial Arts 2

Gym Club 1,3

*"Jimmy" . . . tall and slender . . . never exerts much hard work to studies . . . can't wait for school to end.*





ROBERT WAYNE TRICE

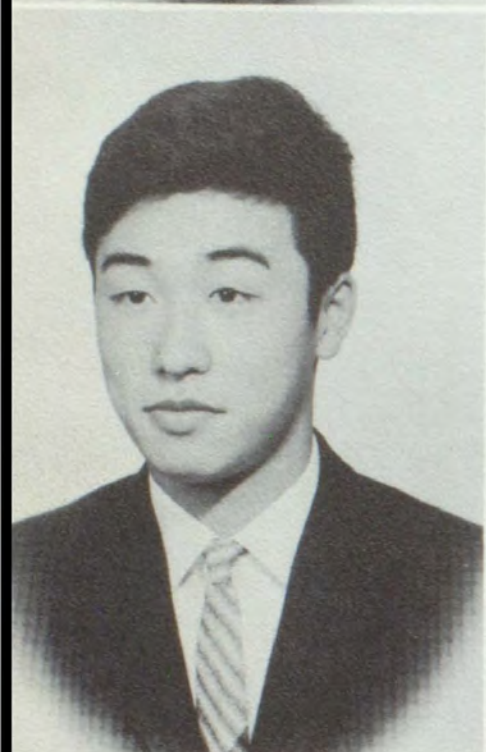
*"There is always a sure reward for faithful silence."*

Art Club 1,3,4

Gym Club 2

Industrial Arts Club 2

*"Robert" . . . can be serious and work hard if he wants to . . . really nice.*



MASAO TSUCHIYA

*"In quietness and confidence shall be your strength."*

Hi-Y 4

Honor Society 4

Executive Council 4

Honorary Member

Student Council

American Field Service Exchange Student from Japan

*"Mas" . . . a joy to know . . . interested and eager to learn . . . a math whiz . . . could teach us a lot about our own life and ways . . . "great guy".*



DOROTHY LOUISE TUCK

*"Manner, not gold, is woman's best adornment."*

F.N.A. 1,2,3,4

Softball 3,4

Executive Council 4

BLUE JAY Typist 4

Guidance Office 3,4

Fashion Show 2

*"Dotty" . . . always sweet and considerate . . . deserves to be called 'Most Courteous' . . . plans to enter the nursing profession . . . often seen with a '59 grad.*

JOHN RICHARD VEASEY

*"If study were the only cause of death, I'd live forever."*

Football 1,2  
Wrestling Club 2,3

Gym Club 1  
Track 2,3

*"Dick" . . . hard-rushing Blue Jay . . . seen wheeling a Pontiac around town  
. . . slow to anger . . . strong as iron.*



ROBERT ALLEN VINCENT

*"I just drift along"*

Football 1,2

F.F.A. 1,2,3  
Treasurer 3

*"Bobby" . . . a member of the Concord "crew" . . . is as nice as they come  
. . . has unique laugh.*



DAVID RICHARD WALLER

*"I came, I saw, I'm leaving."*

Industrial Arts Club 4

*"Dave" . . . avid hunter . . . likes cars . . . his dark hair and eyes accent  
his good looks . . . always has a good time.*





*"Verleada"* ANN WARD

*"An honest man's word is as good as his bond."*

Art Club 3,4  
Chorus 2,4  
F.N.A. 1,2

Fashion Show 1,2,3  
Perfect Attendance 2

*"Verlaada" . . . can dish out sarcasm when she wants . . . usually nice and willing to please . . . does her part.*



CAROL ANN WHEATLEY

*"My interest is in the future because I am going to spend the rest of my life there."*

*"Carol" . . . has lovely blonde hair . . . will be glad to graduate . . . usually silent . . . sincere to those who know her . . . loves to have fun.*



ELINOR ANN WHEATLIEY

*"Patience is the best remedy for every trouble."*

Basketball 1,2,3,4  
Softball 3,4  
Gym Assistant 4  
ALOHA  
Assistant Sports Editor  
BLUE JAY Typist 4  
Jr. Play Ticket Chairman

Tri-Hi-Y 1,2,3,4  
Jr. & Sr. Bake  
District Chairman  
Chorus 4  
Fashion Show 1,2,3  
Chairman 3  
Executive Council 2

*"Ann" . . . capable forward on basketball team . . . always ready to help class . . . sincere and understanding . . . could be trusted with key to Fort Knox.*

THOMAS ALFRED WHEELER

*"I may be as good as I please if I please to be good."*

Football 1,2,3,4

Co-captain 4

Track 1,2,3,4

Gym Assistant 3,4

Fire Squad 4

Chorus 3,4

"Li'l Abner"

"Oklahoma"

Hi-Y 4

Wrestling Club 3

Gym Club 1

Basketball 1

*"Tom" . . . good-looking . . . will probably still be dancing when he is old and gray . . . likes all kinds of sports—including running laps around physics lab . . . a notorious flirt.*



HOWARD LEE WILKERSON

*"The only way to get rid of temptation is to yield to it."*

Honor Attendance 1

F.F.A. 1

*"Howard" . . . little-known member of the class . . . has nice smile.*



DOLORES WRIGHT

*"I don't care if men are all alike, I want one."*

BLUE JAY Typist 4

Softball 3,4

Sr. Bake

District Chairman

Dramatics Club 3,4

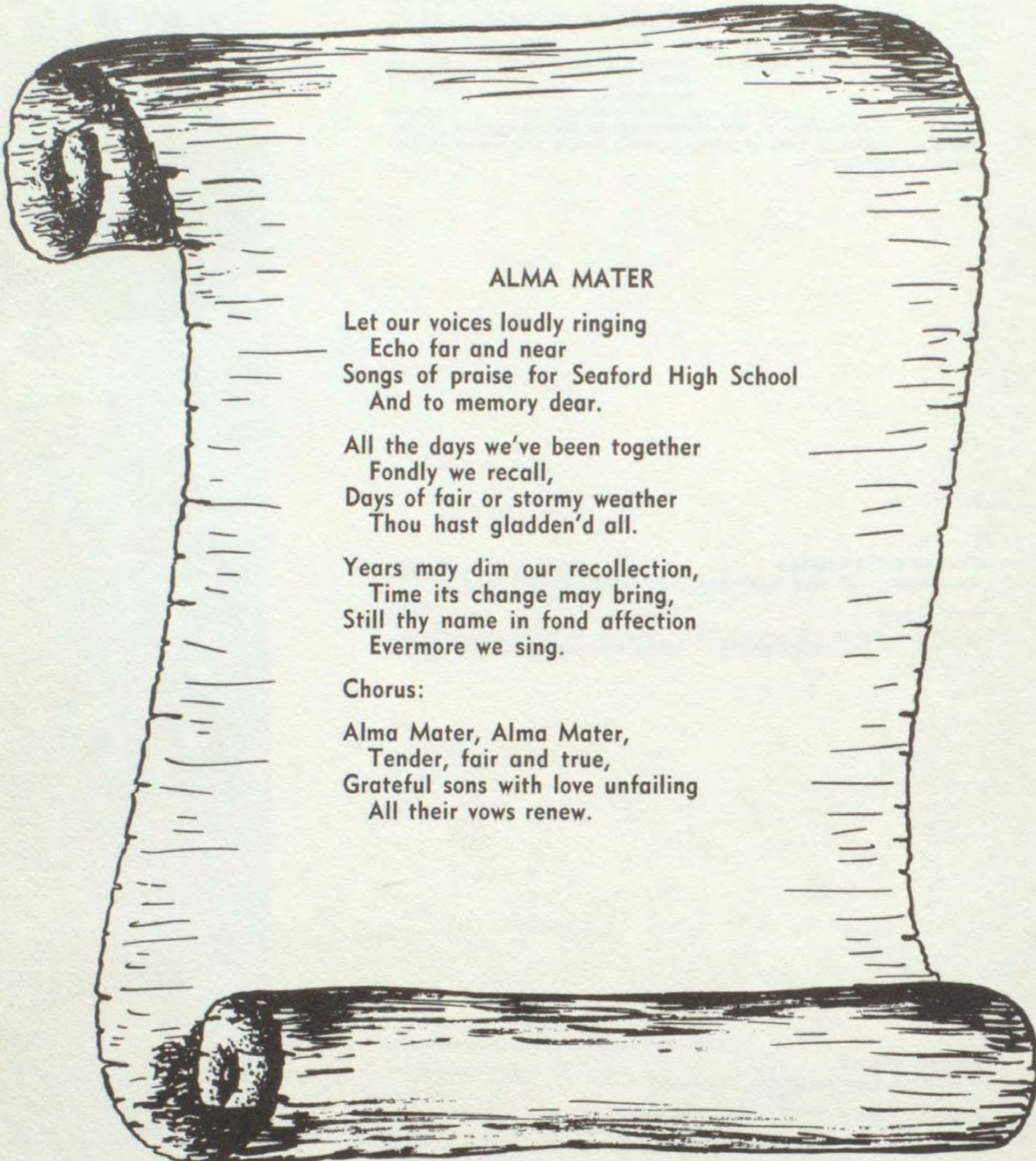
Jr. Play Usher

Chorus 1,3

Cheerleading Club 1

*"Dolores" . . . just like a bouncing bubble all the time . . . her two loves are horses and males . . . has many smiles.*





### ALMA MATER

Let our voices loudly ringing  
Echo far and near  
Songs of praise for Seaford High School  
And to memory dear.

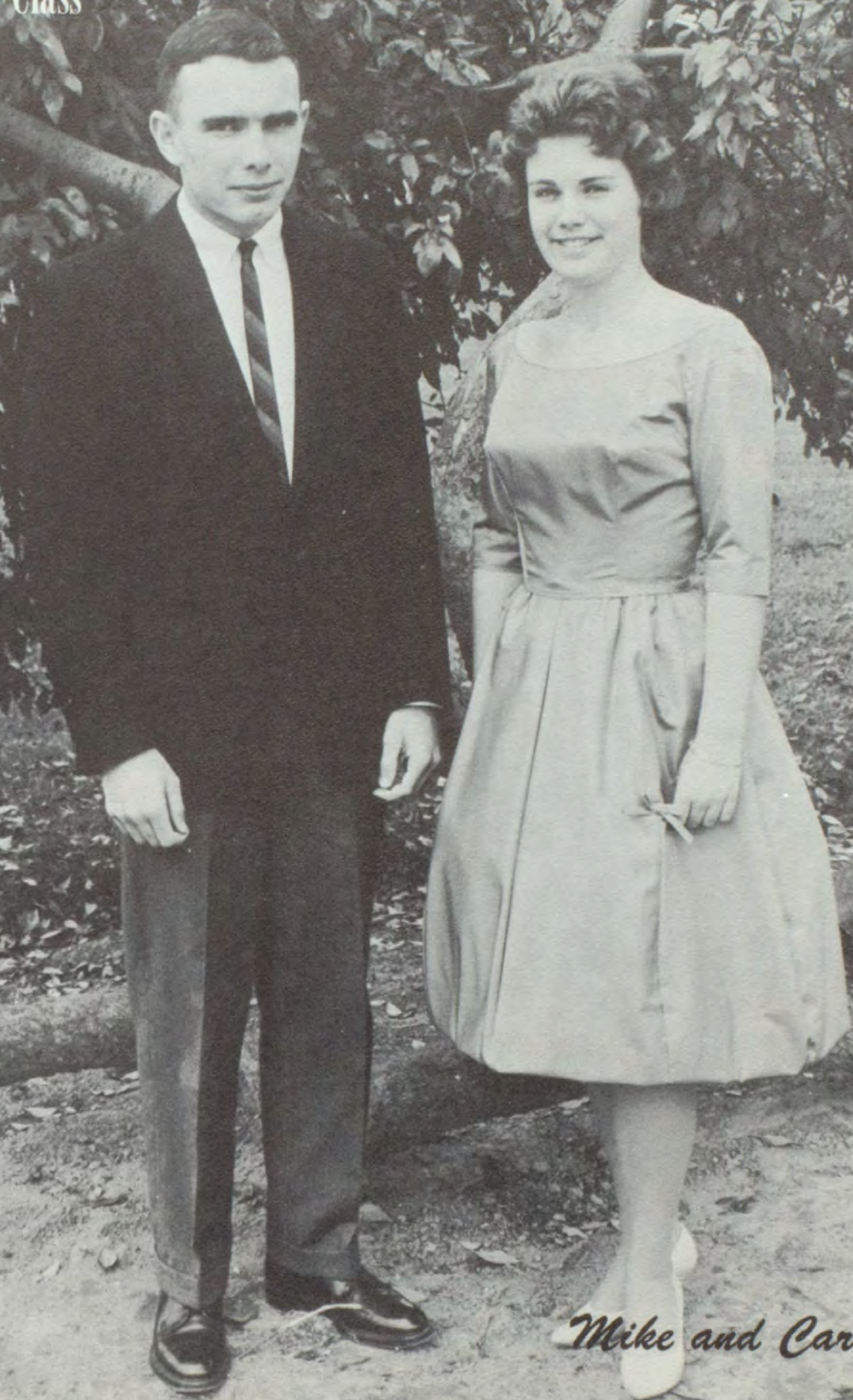
All the days we've been together  
Fondly we recall,  
Days of fair or stormy weather  
Thou hast gladden'd all.

Years may dim our recollection,  
Time its change may bring,  
Still thy name in fond affection  
Evermore we sing.

Chorus:

Alma Mater, Alma Mater,  
Tender, fair and true,  
Grateful sons with love unfailing  
All their vows renew.

Mr. and Miss Class



*Mike and Carol*

Best Looking

*Tom Carol*



Best Dressed

*Ed Pat*



SEE  
PERSON



Most Courteous

*George Dotty*

Most Sincere

*Carol Howard*



IOR  
ALITIES

Most Likely to Succeed

*John Janey*



Most Service to Class

*Jack Marge*



SEN  
PERSON



Most School Spirit

*Tom Nance*

Most Athletic

*Bud Deede*



FOR  
QUALITIES

Most Talented

*Bodey Lee*



Best Dancers

*Tom Elaine*

SEN  
PERSON



## Best Orators

*Ken Vickie*

## Life of Every Party

*Sue Woody*

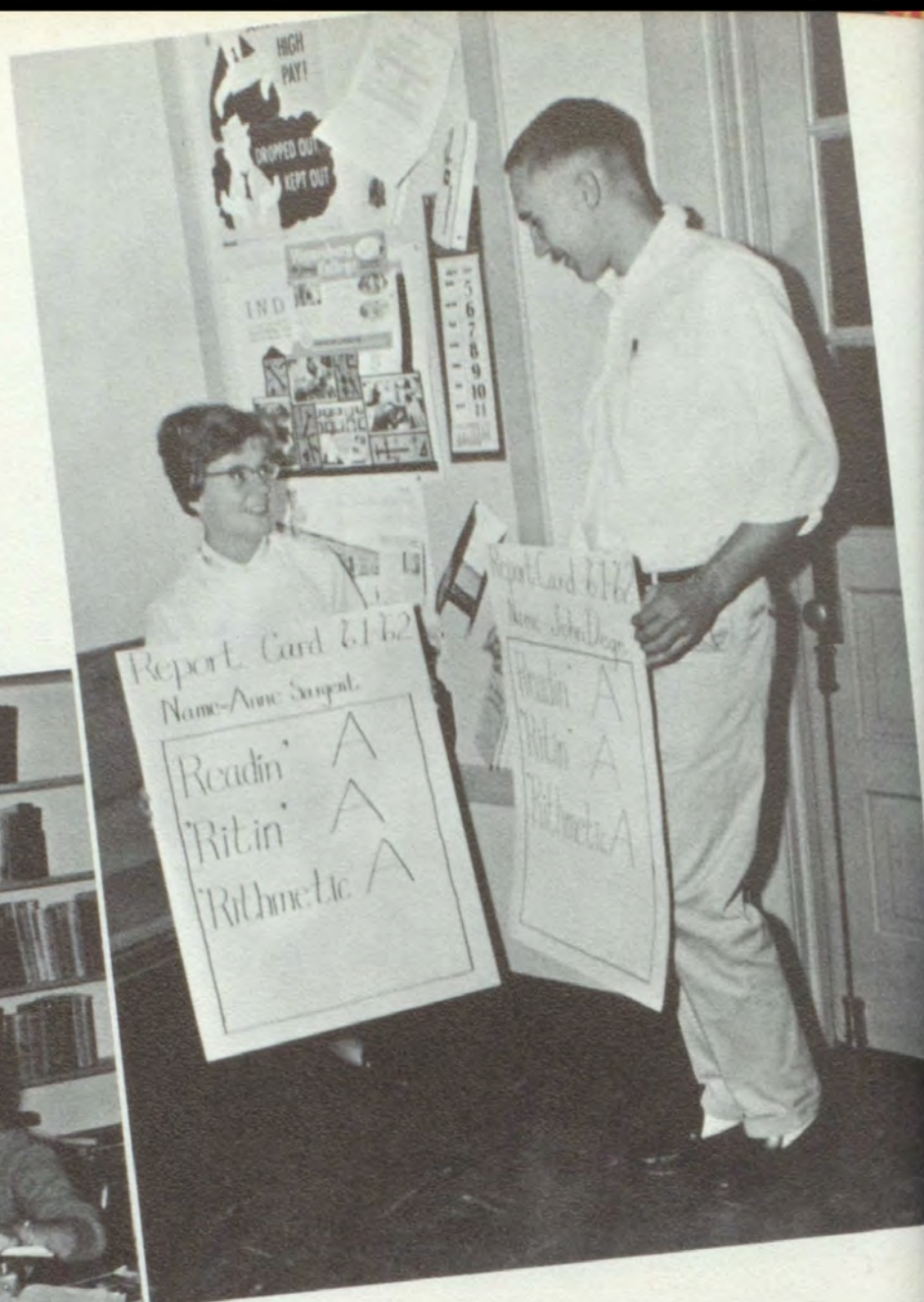


IOR  
ALITIES

## Most Studious

*Neil*

*Fran*

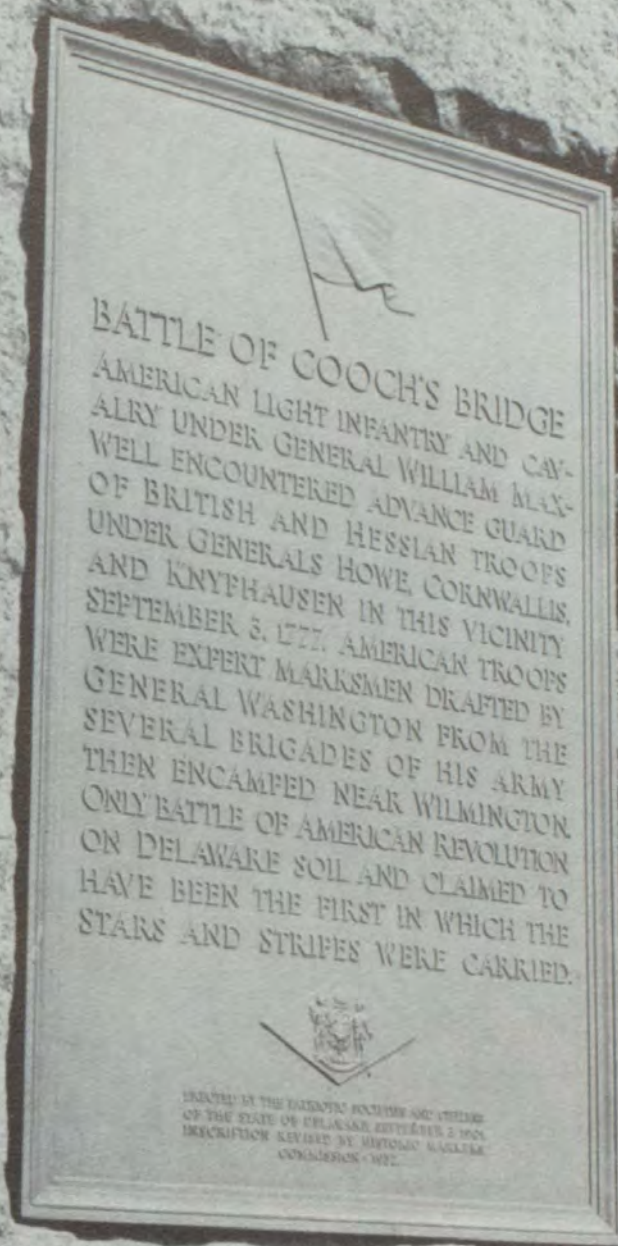


## Most Intellectual

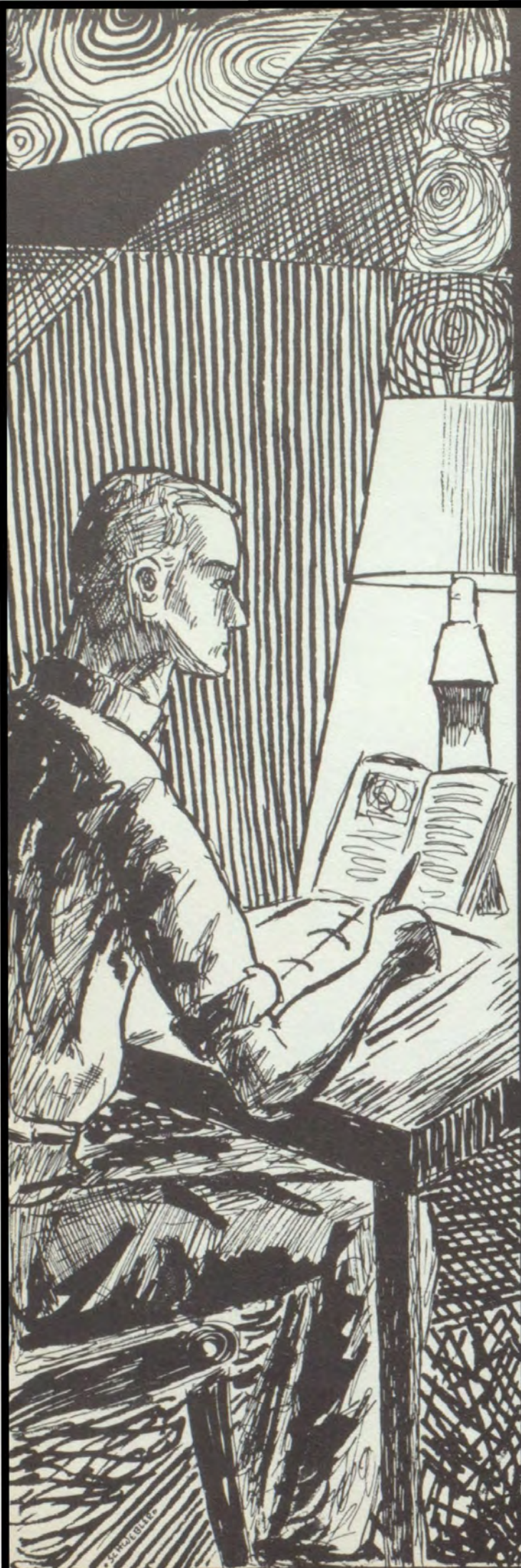
*Anne*

*John*

# Underclassmen



*This monument is at the site of Cooch's Bridge where the Stars and Stripes are said to have been first unfurled in battle. This was the only skirmish actually fought on Delaware soil during the Revolution, but many post-war battles are staged daily by the underclassmen in their courageous fight for survival in a Senior world.*





## Junior Leaders Coordinate First Projects

Gary McCabe  
Treasurer

Phil Wainwright  
President

Gary Hastings  
Vice-President

Carla Wilkins  
Secretary

Judy Hitchens  
Historian

Sherry Adams  
Albert Atkinson  
Peggy Bennett  
Susan Bie  
Joe Bishop



Jim Blackwell  
Gary Boggs  
Richard Bradley  
Kathy Breasure  
Eugene Bryan



Linda Bryan  
Virginia Carmean  
Dee Carney  
Paula Collins  
Darlene Conaway



## CLASS OF 1963



Cam Cool  
Tommy Cooper  
Sharon Covey  
Janet Darby  
Terry Davis



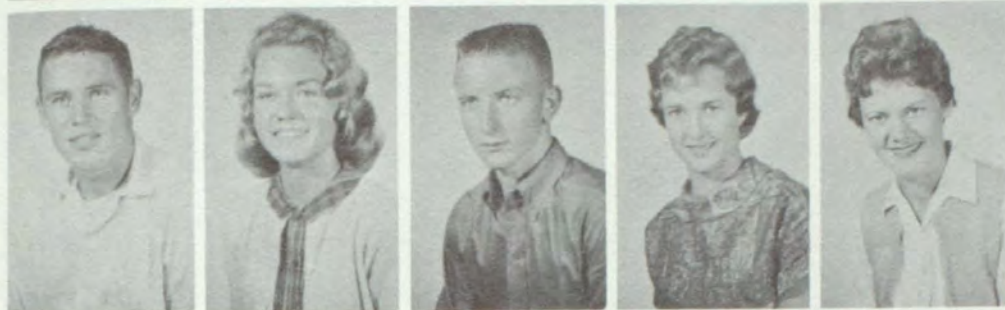
Donald Doar  
Peggy Dove  
Richard Dukes  
Bobbi Emory  
Sandy Ennis



Jean Ferrell  
Doug Figgs  
Charles Fleetwood  
Judy Floyd  
Wayne Fraizer



Bobbi Glime  
Janice Goodrich  
Jim Goodwill  
Edie Guthrie  
Gary Hastings



Grover Hastings  
Margaret Hastings  
Gary Hinkson  
Judy Hitchens  
Doris Holden



Rita Holloway  
Shirley Hudson  
Keith Jester  
Phyllis Jester  
Norma Johnson

## CLASS OF 1963

Jo Ann Joseph  
Mary Joines  
Ricky Judson  
Lynn Keene  
Frances Kelley



C. M. Kohlenberg  
Bill Krumm  
Lawrence Lank  
Cathy Lawrie  
Bill Lloyd



Diane Lord  
Becky Lovelace  
Bill Mahr  
Carol Marino  
Sue Marsh



Chuck Marvel  
Ruth Maser  
Chad Masterson  
Larry Mathis  
Gary McCabe



Jim McCabe  
Jack McMullen  
Dave Melvin  
John Messick  
Marvin Messick



Gene Miller  
Phillip Moore  
Ronnie Moore  
Bobby Norwood  
Joe Nusbaumer



## CLASS OF 1963



John O'Bier  
Edie O'Day  
Milton Passwaters  
Edward Phillips  
Peggy Phillips



Mary Porches  
Harry Price  
Diann Pusey  
Harry Pusey  
Suesann Richards



Bob Roberts  
William Robertson  
Bob Steele  
Lynn Stewart  
Arsie Tate



Jerry Taylor  
John Temple  
Carolyn Thomas  
Joyce Timmons  
Bill Trice



Lester Trice  
Anna Jane Udhe  
Karl Van Tine  
Mike Vincent  
Phil Wainwright



Lesley Ward  
Gail Walls  
Sharon Westcott  
Dickey Wetter  
Earl Whaley

## CLASS OF 1963

Carla Wilkins  
Sydney Willey  
Vivian Wilson  
Jim Woodman  
Judy Yerkes  
Jeff Ziemer



*"Now just where am I supposed to sit in assembly" is heard as teachers diligently check charts.*







## Sophomore Five Drive Through Second Year

Lisa Foulk  
Treasurer

Nancy Hastings  
Secretary

Barbara Nesbitt  
Historian

Ross Hearn  
President

Denny McCord  
Vice-President